

- ▶ [TRIRIGA Wiki Home](#)
- ▶ [Facilities Management ...](#)
- [Facilities Maintenance](#)
- ▶ [Environmental & Energ...](#)
- ▶ [Real Estate Management](#)
- ▶ [Capital Project Manage...](#)
- ▼ [CAD Integrator-Publish...](#)
- ▼ [Version 12](#)
- [Changes in version 12](#)
- [Changes in version ...](#)
- [Changes in version ...](#)
- [AutoCAD Command ...](#)
- [Replicating Legacy ...](#)
- [Troubleshooting CA...](#)
- [Troubleshooting CA...](#)
- [Turn on full logging i...](#)
- [Import a HTTPS cert...](#)
- [MicroStation fails to ...](#)
- [AutoCAD fails to loa...](#)
- [Accessing the CI Ins...](#)
- [12.x Application Defi...](#)
- [Only one Gross Are...](#)
- [Options for selectin...](#)
- [Manual Import of a 1...](#)
- [\(12.1.x and later\) Co...](#)
- [Finding Floors with ...](#)
- [Manual Import of a 1...](#)
- [Troubleshooting \(12...](#)
- [Trouble Installing or ...](#)
- [Troubleshooting CI ...](#)
- [Tips on Uploading S...](#)
- [MicroStation fails to ...](#)
- [Troubleshooting - A...](#)
- [Troubleshooting - Mi...](#)
- [CAD Mapping Limita...](#)
- [Space Label Generato...](#)
- [Exporting Uploaded C...](#)

- ▶ [BIM](#)
- ▶ [IBM TRIRIGA Connector...](#)
- ▶ [IBM TRIRIGA Anywhere](#)
- ▶ [IBM TRIRIGA Applicatio...](#)
- ▶ [Release Notes](#)
- ▶ [Media Library](#)
- ▶ [Best Practices](#)
- ▶ [Upgrading](#)
- ▶ [Troubleshooting](#)
- ▶ [UX Framework](#)

Index
Members
Trash

Tags

Find a Tag

analysis application
availability_section best_practices
cad_change_management
changes_compare
compare_revisions
customizations customize
database db2 exchange
find_available_times gantt_chart
gantt_scheduler group
memory_footprint modifications
modify_object_label
object_revision
operating_system oracle
performance platform

You are in: [IBM TRIRIGA](#) > [CAD Integrator-Publisher and BIM](#) > [Version 12](#) > [Replicating Legacy Label Behavior with Label Filters](#)

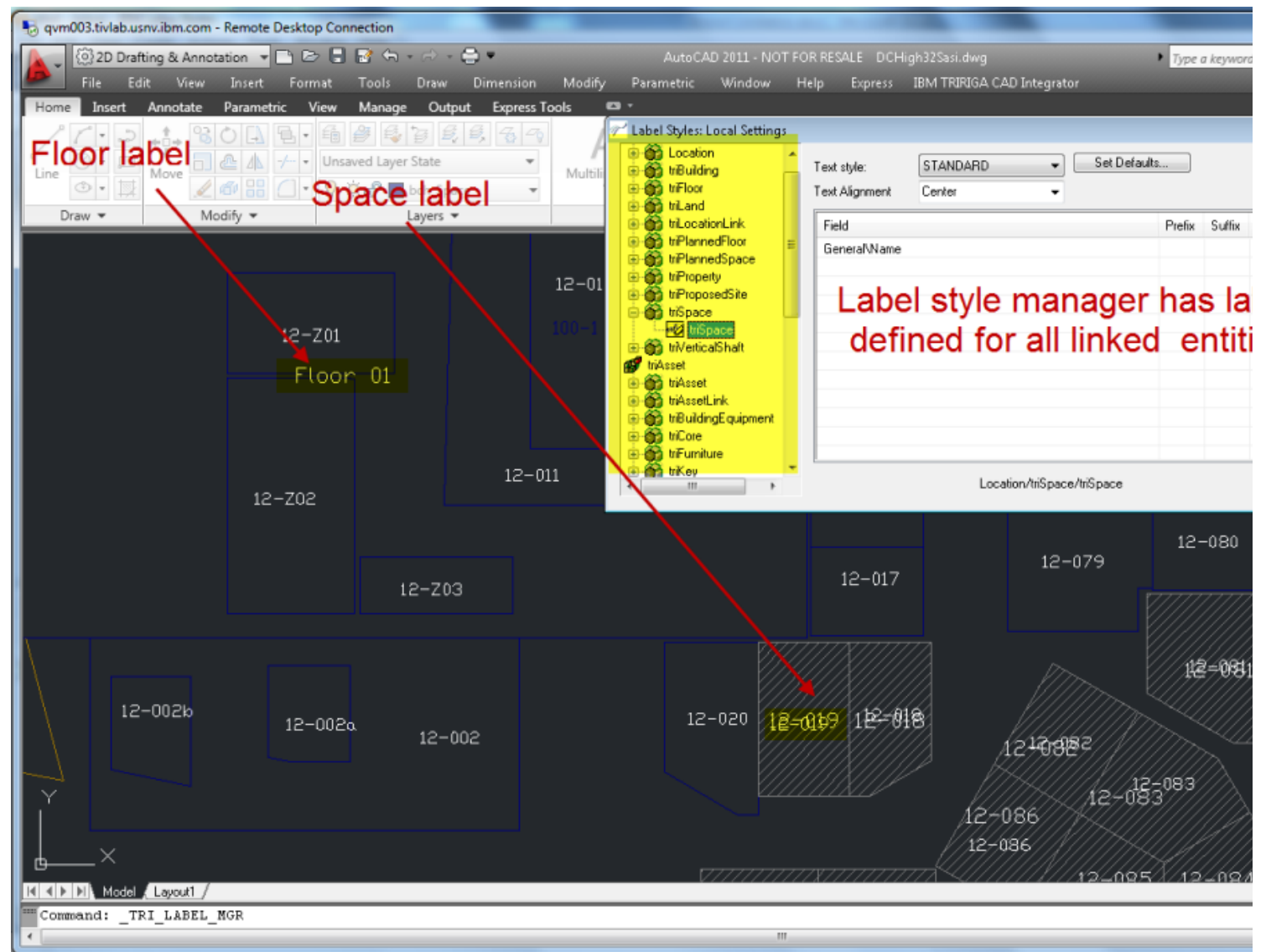
Replicating Legacy Label Behavior with Label Filters

Updated January 9, 2013 by [SasiGodavarmaan](#) | Tags: *None*

Page Actions

CAD Integrator (CI) versions prior to version 12 would by default display labels for multiple object types at the same time. For example, label styles could be applied for spaces, the floor boundary, people and assets, and would all display at the same time. With version 12, CI uses standard server-side Label Styles, and as a result works similar to Graphics sections, where only one label style can be applied per object at one time. The appropriate method to apply multiple Label Styles at once is to use a Label Filter. This article outlines how to create a Label Filter for use in version 12 of CI that behaves the same way labels did in prior versions of CI.

The following screenshot display Floor and Space label applied at the same time in an attached drawing in CAD Integrator version 10.



Similar results in CAD Integrator Version 12 will require adding a CAD Label Filter record with a criteria line item for each linked boundary or block. The following screenshot is a CAD Label Filter record created in TRIRIGA which will replicate applying labels similar to CI 2011 version 10.

CAD Label Filter: 1000013 - Windows Internet Explorer

http://i3550x1m7.tivlab.usnv.ibm.com:15001/WebProcess.srv?objectId=750000&actionId=750011&propertyId=208133&projectId=1&specId=12056893&specTypeId=10024642&action=Edit&altGuiListId=-1

CAD Label Filter: 1000013

General System Work Flow Instance Associations

General

ID: 1000013 Status: Active

Name: sgCAD All BO Labels

Default Label Style: **Add a criteria line for each of the linked objects.**

Criteria

| Order | Report Module | Report BO | Filter Report | Label S |
|-------|---------------|----------------------------|-----------------------------|----------|
| 1 | Location | Floor (triFloor) | sgCI - Floor Records | sgCAD Fl |
| 2 | Location | Space (triSpace) | sgCI - Space Records | sgWeb Sp |
| 3 | triCommon | Area (triArea) | sgCI - Area Overlay Records | sgCAD Ar |
| 4 | triAsset | Telephones (triTelephones) | sgCI - Telephone Records | sgCAD Te |
| 5 | triPeople | People (triPeople) | sgCI - People Records | sgCAD Pe |

Save Save & Close More x

Steps to create the CAD Label Filter record.

Log in to TRIRIGA as an admin user to create a new CAD Label Filter. In a newly installed 3.3 platform/10.3 application CAD Integrator admin menu items can be found by clicking Tools menu > Administration > CAD Integrator.

1) Create a CAD Label Style that will render label for Floor boundary when gross area boundary is attached. This is a screenshot of a CAD Label Style record for Floor boundary in TRIRIGA.

Note that if there are existing label style defined for Floor BO, then it can be used for the label filter and there is no need to create new one.

problem_determination reports
 reserve reserve_performance
 revision revising
 single_sign-on snapshot space
 sql_server sso support system
 system_performance
 tags: track_customizations
 tririga troubleshoot tuning
 upgrade ux version versioning

Cloud | List

Members

Floor Label Style

General

ID: 1000031 | Status: Active

Name: sgCAD Floor Label

Module: Location

Business Object: Floor (triFloor)

Form: Floor (triFloor)

Line Spacing: 1.00

Default Height: 12

Default Color: ■

Label Elements

| Order | Module | Business Object | Field | Font | Prefix | Suffix | Height |
|-------|----------|------------------|---------------------------------------|------|-----------|--------|--------|
| 1 | Location | Floor (triFloor) | Name (triNameTX) | | | | |
| 2 | Location | Floor (triFloor) | Gross Area (triGrossAreaNumNU) | | Gross: | | |
| 3 | Location | Floor (triFloor) | Gross Measured Area (triGrossMAreaNU) | | Measured: | | |

2) Create a CAD Label Style that will render label for Space boundary when a space boundary is attached or uploaded. This is a screenshot of a CAD Label Style record for Space boundary in TRIRIGA.

Space Label Style

General

ID: 1000032 | Status: Active

Name: sgWeb Space Class

Module: Location

Business Object: Space (triSpace)

Form: Space (triSpace)

Line Spacing: 1.00

Default Height: 8

Default Color: ■

Label Elements

| Order | Module | Business Object | Field | Prefix | Suffix | Height |
|-------|----------------|--|------------------|--------|--------|--------|
| 1 | Location | Space (triSpace) | Name (triNameTX) | | | |
| 2 | Classification | Space Class Current (triSpaceClassCurrent) | Name (triNameTX) | | | |
| 3 | Location | Space (triSpace) | Area (triAreaNU) | Area: | | |

3) Create a CAD Label Style that will render label for Area Overlay boundary when an Area Overlay space boundary is attached or uploaded. This is a screenshot of a CAD Label Style record for Area Overlay boundary record in TRIRIGA.

Area Overlay label style

General

ID: 1000043 | Status: Active

Name: sgCAD Area Overlay Label

Module: triCommon

Business Object: Area (triArea)

Form: Area Overlay (triArea)

Line Spacing: 1.00

Default Height: 8

Default Color: ■

Label Elements

| Order | Module | Business Object | Field | Prefix | Suffix | Height |
|-------|--------------|-----------------------------|------------------|-------------|--------|--------|
| 1 | triCommon | Area (triArea) | Name (triNameTX) | | | |
| 2 | triCommon | Area (triArea) | Area (triAreaNU) | Area: | | |
| 3 | Organization | Organization (Organization) | Name (triNameTX) | Charged To: | | |

4) Create a CAD Label Style that will render label for Asset blocks when an Asset block is inserted or attached. This is a screenshot of a CAD Label Style record for Telephone block record in TRIRIGA.

Telephone label style.

General

ID: 1000045 | Status: Active

Name: sgCAD TelephoneBlock Label

Module: triAsset

Business Object: Telephones (triTelephones)

Form:

Line Spacing: 1.00

Default Height: 12

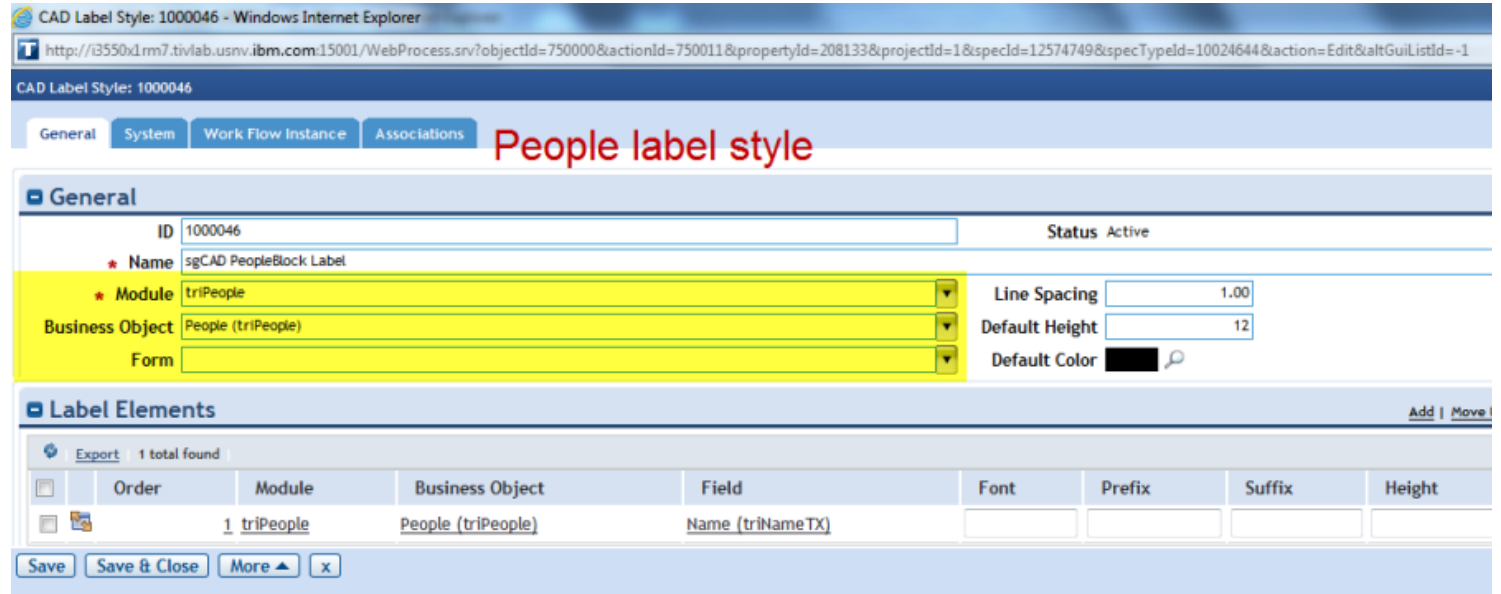
Default Color: ■

Label Elements

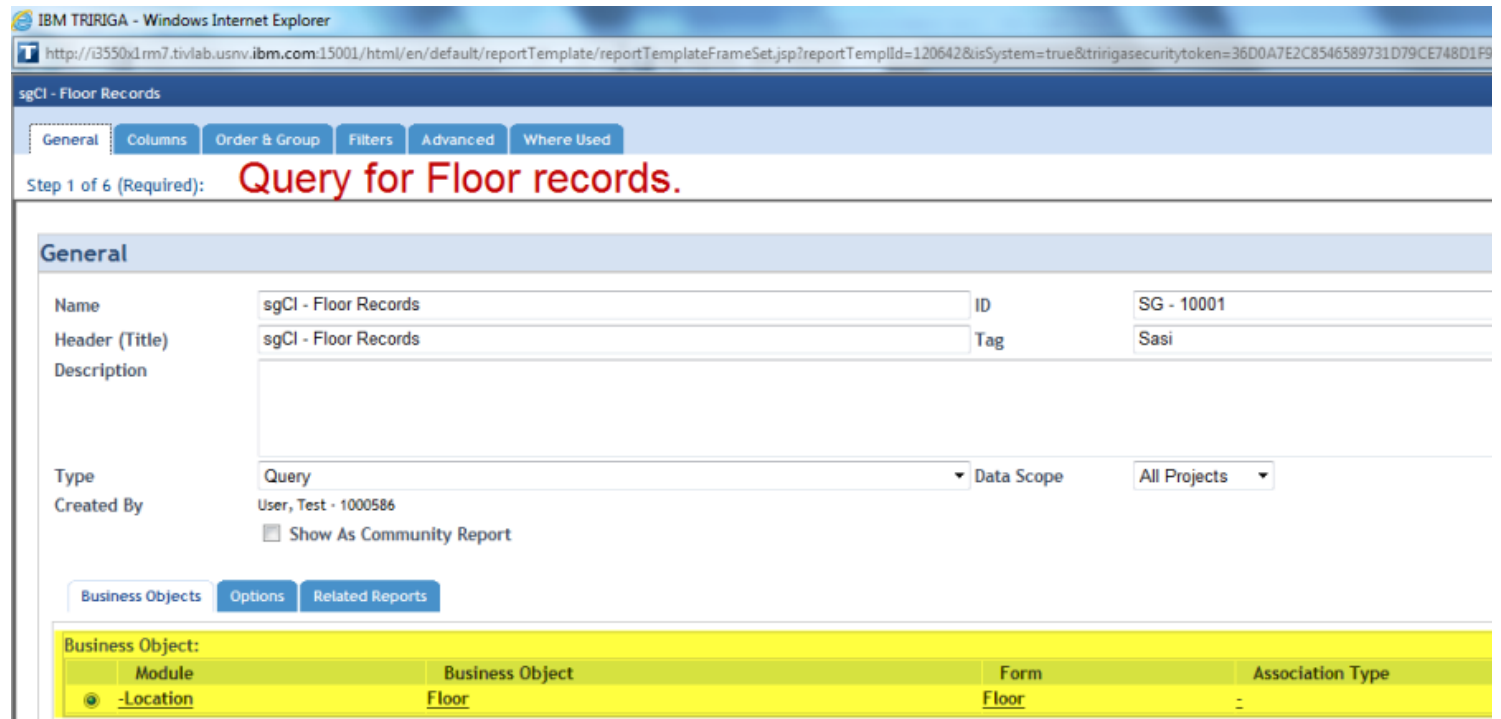
| Order | Module | Business Object | Field | Prefix | Suffix | Height |
|-------|----------|----------------------------|------------------|--------|--------|--------|
| 1 | triAsset | Telephones (triTelephones) | Name (triNameTX) | | | |

Similar label style records can be created for other asset blocks that are going to be linked in CI.

5) Create a CAD Label Style that will render label for People blocks when an People block is inserted or attached. This is a screenshot of a CAD Label Style record for People block record in TRIRIGA.

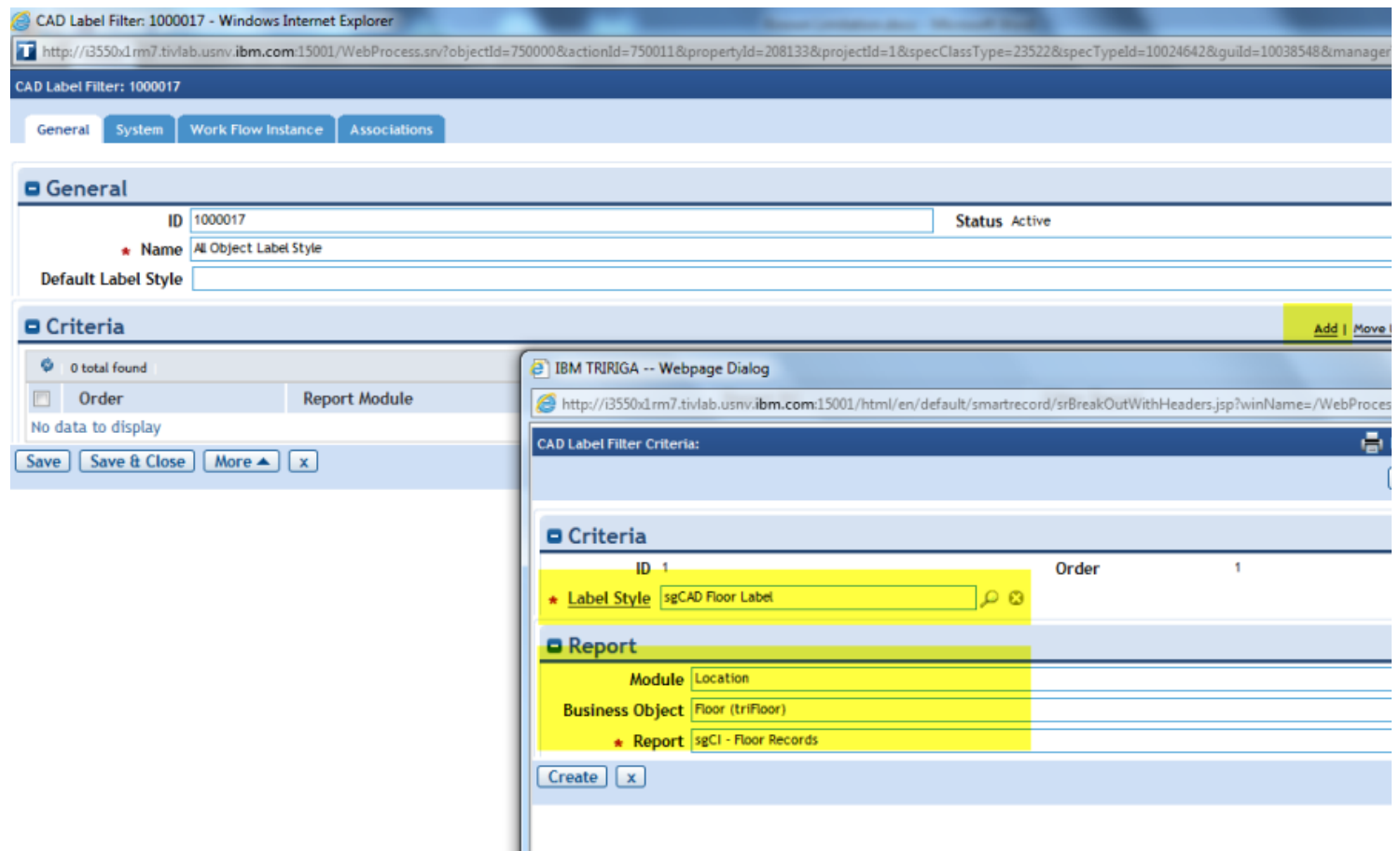


6) Create a query for each of the Business object that you created a label style. This screenshot is an example for Floor query.



Tip: Set a filter condition in the query so that Retired records are not returned by the query result. This will make sure that retired records does not display label style in CI.

7) Create a new CAD Label Filter record. Enter a name and click Create. After the Label Filter record is created, click Add in Criteria section. This will open a Criteria line item window. For Label style field, select the Floor Label style created in Step #1. Set Module = Location, BO = triFloor and the Floor report created in step #6.



8) Add similar criteria line items for Space, Area Overlay, Assets, and People. The CAD Label Filter record will look similar to the following screenshot.

| Order | Report Module | Report BO | Filter Report | Label S |
|-------|---------------|----------------------------|-----------------------------|----------|
| 1 | Location | Floor (triFloor) | sgCI - Floor Records | sgCAD Fl |
| 2 | Location | Space (triSpace) | sgCI - Space Records | sgWeb Sp |
| 3 | triCommon | Area (triArea) | sgCI - Area Overlay Records | sgCAD Ar |
| 4 | triAsset | Telephones (triTelephones) | sgCI - Telephone Records | sgCAD Te |
| 5 | triPeople | People (triPeople) | sgCI - People Records | sgCAD Pe |

9) In CAD Integrator apply the newly created CAD Label Filter created in step #7. The following screenshot display Floor and Space label applied at the same time in an attached drawing in IBM TRIRIGA CAD Integrator/Publisher Version 12 application.

10) Set this newly created CAD Label Filter in the default theme record for CAD Integrator to replicate applying Label Style similar to legacy CI.

Comments (0) | Versions (15) | Attachments (24) | About

There are no comments.

Feed for this page | Feed for these comments

